

Front License Plate on a Bentley Continental



When I bought my first Bentley Continental, I remember indelibly that the salesman asked me if I wanted to have the front license plate installed by the service department. The front license plate was required by law, but they always asked their clients because it meant drilling holes in the front of the car. When I looked at examples of what he was talking about, I declined like the majority of others have done in my situation. However, because I had been stopped by a policeman before, when the front license plate was missing on my Mercedes, it kept haunting me. Since I like to take frequent trips in my CGTC, I don't want to provide an excuse to be stopped in some areas of the country that are hungry for revenue. I researched the situation and found that, indeed there are incentives for these government entities to require a front license plate and to enforce the law for that requirement.

Taken from ehow:

- 1) "States that require a front plate report a higher incidence of traffic violations reported by infrared cameras at urban intersections and toll booths."
- 2) "Besides traffic violations, License Plate Recognition Technology has proven helpful in apprehending wanted felons, prison escapees and vehicles associated with Amber Alerts."
- 3) "The biggest argument for laws requiring front and rear plates is revenue generation for state budgets. When states require two plates they can charge a

Front License Plate on a Bentley Continental

higher fee for license plate renewal. These fees vary by state, but are generally higher than states that require only a single rear plate.”

http://www.ehow.com/about_5250734_us-laws-front-license-plates.html

Therefore, there are many reasons for states to require a front license plate and to enforce that the law for this requirement. Becoming convinced that I would comply with the law, I did a fair amount of research on what solutions might be readily available ready to purchase. The only one I found cost \$195 and is clipped on the front grill. The beauty of this product is that it can be easily removed (for car shows). The problem with it is that it can be easily removed (by the curious, by someone wanting a Bentley souvenir, etc.) This could result in leaving you short \$195 and no front license plate. This would necessitate replacing it at some cost and inconvenience. That said, this is the web site for those who have an interest in the product and would do things like faithfully remove the license plate when the car is not in use:

<http://chairpilotproducts.com/index.php/products/custom-mounts/bentley-gt>

Since I definitely have a lazy streak, I knew I would not faithfully remove the license plate when not in use and I really wanted something that might look a little better when in use (not jutting out 3” from the car). In addition, I wanted a solution that would:

- 1) Not require holes to be drilled into the front bumper
- 2) Comply with the legal requirements of the great state of Texas
- 3) Be relatively easy to remove and install if I wanted to do so

My solution involved attaching a license mounting plate to the lower grill by using cable ties. Then the license plate could be attached to the license mounting plate. The materials and equipment with current related cost:

- | | |
|--|--------|
| 1) License mounting plate | \$5.22 |
| 2) Cable ties (14” length - 100 count) | 7.88 |
| 3) License plate frame (optional)* | 6.99 |
| 4) Cable Tie Routing Tool | |

*Note: The license plate frame, in order to meet legal requirements, must be such that it does not cover any of the lettering on the Texas license plate.

Front License Plate on a Bentley Continental

Materials and Equipment Used:

1) License mounting plate



Cruiser Accessories 79150 Mounting Plate, Black

by [Cruiser Accessories](#)

★★★★☆ (17 customer reviews)

List Price: ~~\$5.49~~

Price: **\$5.22** ✓Prime

You Save: **\$0.27 (5%)**

In Stock.

Ships from and sold by **Amazon.com**.

8 new from **\$3.99**

http://www.amazon.com/gp/product/B00032K4VA/ref=oh_details_o02_s00_i03

2) Cable ties (14" length - 100 count)



GB 46-315 Electrical 14-Inch Cable Ties, Natural, 100-Pack

by [GB](#)

★★★★☆ (6 customer reviews)

List Price: ~~\$11.34~~

Price: **\$7.88** ✓Prime

You Save: **\$3.43 (30%)**

In Stock.

Ships from and sold by **Amazon.com**. Gift-wrap available.

Want it delivered Tuesday, October 30? Order it in the next **33 hours and 24 minutes**, and choose **One-Day Shipping** at checkout. [Details](#)

16 new from **\$1.32**



Up to 40% Off DIY Essentials

Save up to 40% on [top picks in Tools & Home Improvement](#). Save money and make your home look like a million bucks. [Shop now](#).

http://www.amazon.com/GB-46-315-Electrical-14-Inch-100-Pack/dp/B00004WLJ7/ref=sr_1_cc_1?s=aps&ie=UTF8&qid=1351433092&sr=1-1-catcorr&keywords=commercial+electric+14+inch+cable+ties

3) License plate frame (optional)



Cruiser Accessories 15030 Neo Chrome License Frame

by [Cruiser Accessories](#)

★★★★☆ (2 customer reviews)

Price: **\$6.99** ✓Prime

Only 4 left in stock (more on the way).

Ships from and sold by **Amazon.com**.

Want it delivered Tuesday, October 30? Order it in the next **32 hours and 37 minutes**, and choose **One-Day Shipping** at checkout. [Details](#)

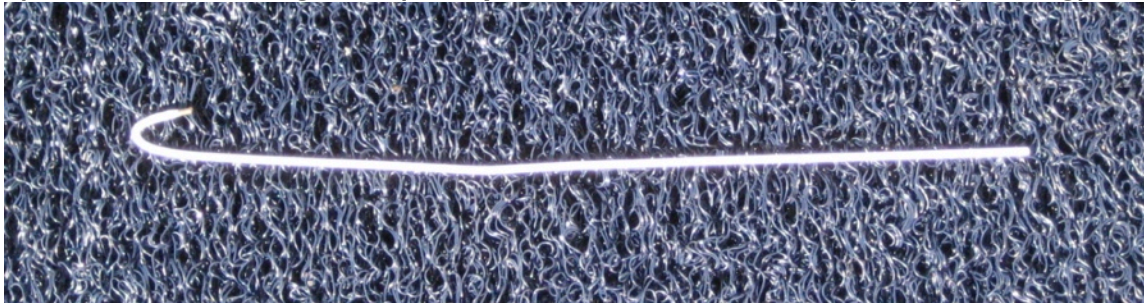
4 new from **\$5.99**

http://www.amazon.com/gp/product/B00236UM6G/ref=oh_details_o00_s00_i00

Front License Plate on a Bentley Continental

Materials and Equipment Used (continued):

4) Cable Tie Routing Tool (bent piece of a coat hanger - patent pending):



Installation Directions:

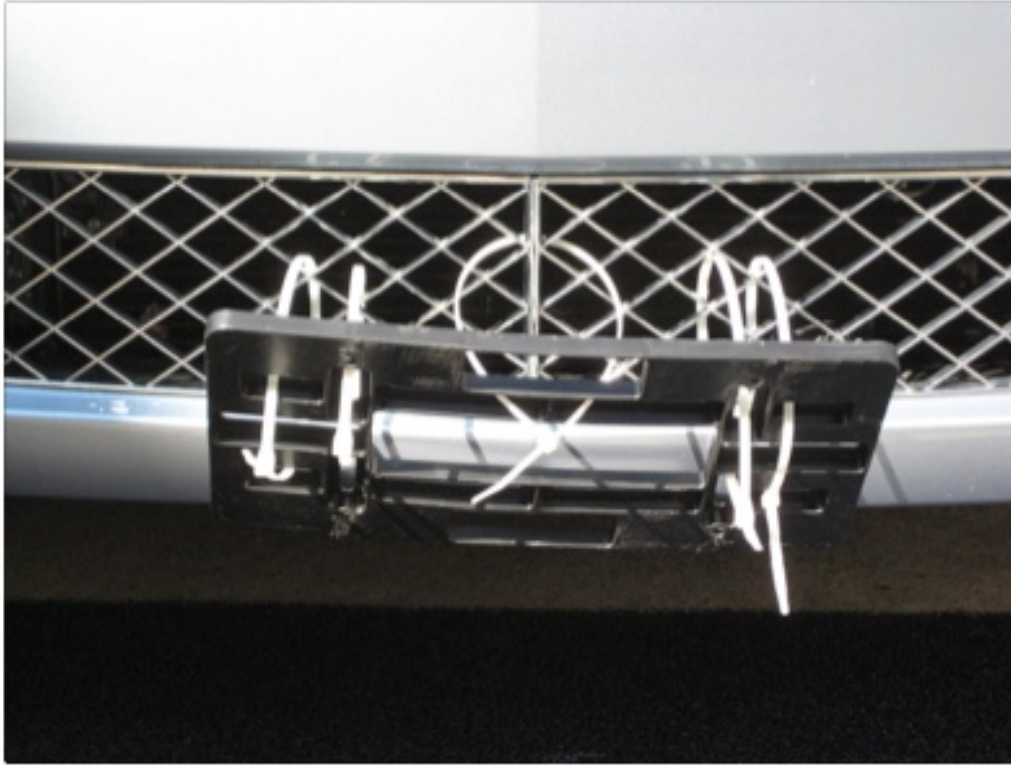
The trick is to use very long cable ties, in this case 14". The reason is that it is easier to route all of the cable ties before you tighten them up with longer cable ties (i.e. If you route each one, tightening as you go, it is harder, if not impossible, to route the remaining cable ties).

1) Route the top center cable tie and secure it as loosely as possible.



Front License Plate on a Bentley Continental

2) Route the remaining cable ties and secure them as loosely as possible.



3) Tighten cable ties starting with the one in the center and cut off excess.



Front License Plate on a Bentley Continental

4) Install the license plate.



FYI - The license plate frame that is shown came with screws that were a little too long in my opinion. So I shortened them before installing the license plate.

If you have installed it a few times, like I have, it can be done relatively quickly. I estimate 5 minutes to install and 1 minute to remove. This means you could take the license plate off the car for car shows and reattach it later for the cost of 5 cable ties and a little time. I did the installation on my first Continental with the regular Bentley license mounting plate. When I traded in the CGT for my present CGTC, I did it the same way on the new car. The problem with using the stock Bentley license mounting plate is that it is lower than the bumper of the car when installed. Therefore you can, and I did, scrape it off of the car when you back off of an incline (FYI - that stock Bentley license mounting plate is about \$300 after being painted to match the car). The good news is that the grill on the Bentley Continental is apparently more than strong enough to hold the license plate. The bottom of the new license mounting plate is slightly higher than the bumper and therefore cannot be scrapped off unless you lose your entire car bumper.

Front License Plate on a Bentley Continental

Due to the fact that the license plate covers part of the grill, I did worry about over-heating at first but have not found any indication that this arrangement will cause that problem. In fact, when I traded in my CGT for the CGTC, the salesman, thought it was a good idea. I saw my old CGT on the sales lot, from time to time, and it still had the license plate where I installed it. Either no one in the service department noticed the license plate installation or they noticed it and didn't think it would cause a problem.

The good news is that, as far as I can tell, this installation meets the requirements for the front license plate without drilling holes in the Bentley Continental. Just like Forrest Gump when he was told that "we don't have to worry about money no more" said "That's good. One less thing to worry about."

Notes:

- 1) The procedures outlined in this article are not approved in any way by Bentley.
- 2) There might be unintended consequences in performing these procedures.
- 3) There is controversy as to if a front license plate is required in Texas due to recent legislation. However, due to the fact that the motor vehicles division issues two plates instead of one and that our members with only the rear plate are being stopped by the police, it is still prudent to consider installing a front plate.