

Porsche Panamera Turbo Power Kit

Vehicle:

Porsche Panamera Turbo

Description:

Increased power from 500 hp to 540 hp and torque 750 Nm. Maximum power for vehicle with sport and other packages power and torque up to 565 hp and 750 Nm.

Advantage of Power Kit:

The high speed of the procedure process (complete 30 minutes – 3 hours), not need dismount engine ECU, no loss of dealer warranty on the vehicle

Need equipment:

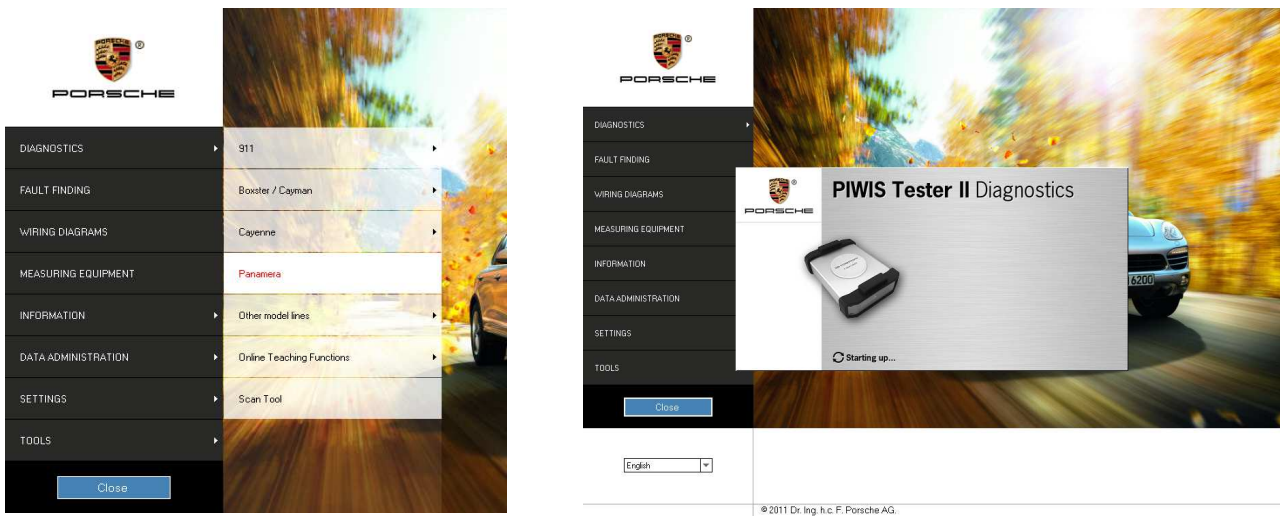
Diagnostic device Porsche PIWIS tester II

Performance Char/Torque diagram:



Instruction for flash power kit firmware in engine ECU

Start PIWIS tester II and after loading software select “Diagnostics” -> “Panamera” in the Main screen.



Identify all ecu in vehicle and check error memory (press F12 key in diagnostic window).

Panamera Program status VG2-09.800.11.08.25 GB

Control unit selection:
Select control unit(s) and continue to control unit search with [F12].

Overview	Extended identifications	Fault memory	Actual values input signals	Drive links checks	Codings adaptations
DTC	Status	Control unit	DSN	Porsche part number	
		Airbag			
		Gateway			
		DME			
		Transmission control			
		Selector lever			
		High-voltage battery			
		High-voltage power electronics			
		Instrument cluster			
		Steering aid			

ESC ? F2 Multimeter F4 Save F5 Filter F7 Additional men F9 Fault finding F10 Logs F12 Next

Panamera Program status VG2-09.800.11.08.25 GB

Control unit overview: Not all versions have been detected.
Control unit search has been completed. Select control unit(s) and select the required function via the menu.

Overview	Extended identifications	Fault memory	Actual values input signals	Drive links checks	Codings adaptations
DTC	Status	Control unit	DSN	Porsche part number	
	🔍	Airbag	000012	97061821305	
		Gateway	Alpha2	97061811505	
		Power distributor	-	97061807500	
		Battery sensor	-	97060616303	
		Energy management	-	-	
		Battery condition	-	-	
		DME V8 naturally aspirated engine EU5	C201	97061856212	
		PDK (Porsche Doppelkupplung)	0x30 00	97061838525	
		Selector lever	0x01 00	97061832000	

ESC ? F2 Multimeter F4 Save F5 Filter F7 Additional men F8 All with FML F9 Fault finding F10 Logs F11 Back

Select engine ECU (one click on row with engine ECU) and press to button “Programming” in top menu.

Panamera Program status VG2-09.800.11.08.25 GB

Control unit overview: Not all versions have been detected.

Control unit search has been completed. Select control unit(s) and select the required function via the menu.

Overview		<< Actual values input signals	Drive links checks	Codings adaptations	Maintenance repairs	Programming >>
DTC	Status	Control unit		DSN	Porsche part number	
		Airbag		000012	97061821305	
		Gateway		Alpha2	97061811505	
		Power distributor		-	97061807500	
		Battery sensor		-	97060616303	
		Energy management		-	-	
		Battery condition		-	-	
		DME V8 naturally aspirated engine EU5		C201	97061856212	
		PDK (Porsche Doppelkupplung)		0x30 00	97061838525	
		Selector lever		0x01 00	97061832000	

End ESC F1 Help F1 Multimeter F2 Search F3 Save F4 Filter F5 Delete F6 Additional men F7 All with FML F8 Fault finding F9 Logs F10 Back F11 Next F12

Attention!!! If have error in engine ecu, not flash power kit firmware in ecu before repair engine!

In new screen select row “Manual programming” and press F12 key.

Panamera Program status VG2-09.800.11.08.25 GB

Control unit programming

Select programming. Press [F12] to continue.

Overview	<< Actual values input signals	Drive links checks	Codings adaptations	Maintenance repairs	Programming >>
Programming mode					
Manual programming					
Automatic programming					

End ESC F1 Help F1 Multimeter F2 Search F3 Save F4 Filter F5 Delete F6 Additional men F7 All with FML F8 Fault finding F9 Logs F10 Back F11 Next F12

After select manual programming compare data in next screen with your vehicle and if data correct press F12 key.

Panamera Program status VG2-09.800.11.08.25 GB

Programming

Please enter vehicle data. Press [F12] to continue, [F11] to go back.

Value group	Coding value	Value	Changed
	Country code	C02 - USA	
	Model year	A - 2010	
	Product code	F73CA - PANAMERA TURBO	

End ESC ? Multimeter F2 Data logger F3 Save F4 Filter F5 Details F6 Additional menu F7 Save F8 Fault history F9 Log F10 Back F11 Next F12

This will display a next selection screen. In this screen you see X numbers group with “PANAMERA TURBO POWER KIT” row. Please click on this row.

Panamera Program status VG2-09.800.11.08.25 GB

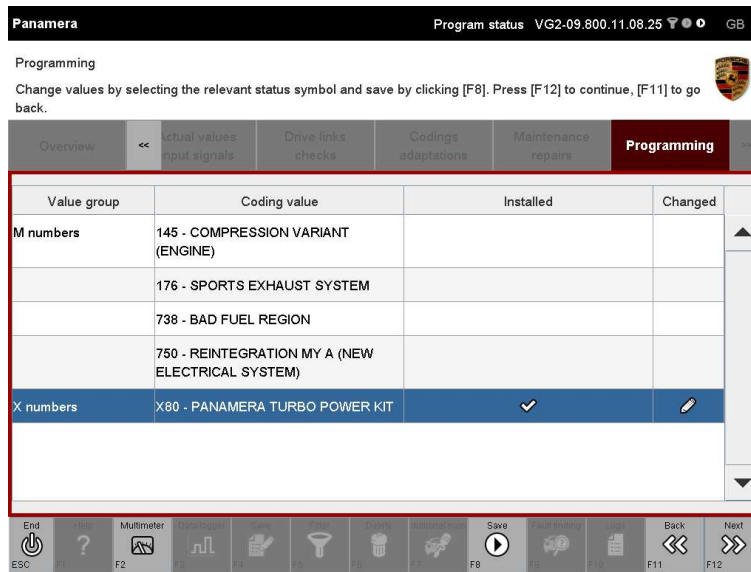
Programming

Change values by selecting the relevant status symbol and save by clicking [F8]. Press [F12] to continue, [F11] to go back.

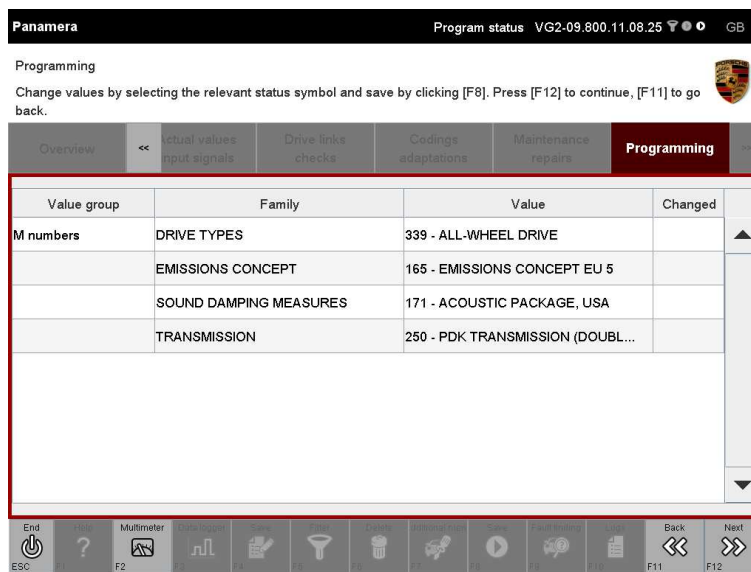
Value group	Coding value	Installed	Changed
M numbers	145 - COMPRESSION VARIANT (ENGINE)		
	176 - SPORTS EXHAUST SYSTEM		
	738 - BAD FUEL REGION		
	750 - REINTEGRATION MY A (NEW ELECTRICAL SYSTEM)		
X numbers	X80 - PANAMERA TURBO POWER KIT		

End ESC ? Multimeter F2 Data logger F3 Save F4 Filter F5 Details F6 Additional menu F7 Save F8 Fault history F9 Log F10 Back F11 Next F12

Confirm the change by pressing the F8 key.



Press F12 key, on next screen compare data with your vehicle.



Press F12 to start flashing engine and transmission ECU. Flashing process takes approximately 8-12 minutes. After finish programming please switch ignition off wait 60 second and start engine. Few times change transmission position. Stop engine and switch ignition on. Read error memory in all vehicle ECU. If have error in transmission please “automation coding” transmission ECU.