

Technical product information

Topic	Bentley Continental series HVAC control motors
Market area	Worldwide Bentley (1WBE)
Brand	Bentley
Transaction No.	2024809/1
Level	EH
Status	Approval
Release date	

New customer code

Object of complaint	Complaint type	Position
Air-conditioning -> Ventilation, air distribution -> Recirculation control	functionality -> without function / defect	
Air-conditioning -> Ventilation, air distribution -> Air distribution controlling -> Air distribution to screens	functionality -> without function / defect	
Air-conditioning -> Ventilation, air distribution	functionality	
Air-conditioning -> Ventilation, air distribution -> Air distribution controlling -> Air distribution to person	functionality -> without function / defect	
Air-conditioning -> Ventilation, air distribution -> Air distribution controlling	functionality -> without function / defect	
Air-conditioning -> Heating, cooling	functionality	

New workshop code

Object of complaint	Complaint type	Position
Air-conditioning -> Air ducting, filtration, blower -> Dashpanel air vent control motor	functionality -> without function / defect	
Air-conditioning -> Heating, cooling -> A/C unit cooling capacity	functionality -> without function / defect	
Air-conditioning -> Heating, cooling -> A/C unit heating capacity	functionality -> uneven	

Vehicle data

Bentley Continental Series

Sales types

Type	MY	Brand	Designation	Engine code	Gearbox code	Final drive code
3W2*	2004	E		*	*	*
3W2*	2005	E		*	*	*
3W2*	2006	E		*	*	*
3W2*	2007	E		*	*	*
3W2*	2008	E		*	*	*
3W2*	2009	E		*	*	*
3W2*	2010	E		*	*	*
3W2*	2011	E		*	*	*
3W2*	2012	E		*	*	*
3W2*	2013	E		*	*	*
3W2*	2014	E		*	*	*
3W2*	2015	E		*	*	*
3W2*	2016	E		*	*	*
3W3*	2004	E		*	*	*
3W3*	2005	E		*	*	*
3W3*	2006	E		*	*	*
3W3*	2007	E		*	*	*
3W3*	2008	E		*	*	*
3W3*	2009	E		*	*	*
3W3*	2010	E		*	*	*
3W3*	2011	E		*	*	*
3W3*	2012	E		*	*	*
3W3*	2013	E		*	*	*
3W3*	2014	E		*	*	*
3W3*	2015	E		*	*	*

Technical product information

Type	MY	Brand	Designation	Engine code	Gearbox code	Final drive code
3W3*	2016	E		*	*	*
3W4*	2004	E		*	*	*
3W4*	2005	E		*	*	*
3W4*	2006	E		*	*	*
3W4*	2007	E		*	*	*
3W4*	2008	E		*	*	*
3W4*	2009	E		*	*	*
3W4*	2010	E		*	*	*
3W4*	2011	E		*	*	*
3W4*	2012	E		*	*	*
3W4*	2013	E		*	*	*
3W4*	2014	E		*	*	*
3W4*	2015	E		*	*	*
3W4*	2016	E		*	*	*
3W7*	2004	E		*	*	*
3W7*	2005	E		*	*	*
3W7*	2006	E		*	*	*
3W7*	2007	E		*	*	*
3W7*	2008	E		*	*	*
3W7*	2009	E		*	*	*
3W7*	2010	E		*	*	*
3W7*	2011	E		*	*	*
3W7*	2012	E		*	*	*
3W7*	2013	E		*	*	*
3W7*	2014	E		*	*	*
3W7*	2015	E		*	*	*
3W7*	2016	E		*	*	*
3W8*	2004	E		*	*	*
3W8*	2005	E		*	*	*

Technical product information

Type	MY	Brand	Designation	Engine code	Gearbox code	Final drive code
3W8*	2006	E		*	*	*
3W8*	2007	E		*	*	*
3W8*	2008	E		*	*	*
3W8*	2009	E		*	*	*
3W8*	2010	E		*	*	*
3W8*	2011	E		*	*	*
3W8*	2012	E		*	*	*
3W8*	2013	E		*	*	*
3W8*	2014	E		*	*	*
3W8*	2015	E		*	*	*
3W8*	2016	E		*	*	*

Chassis numbers

Manufacturer	Filler	Type	Filler	MY	Factory	From	To	Prod from	Prod to
SCB	*	3W	*	*	*	000001	999999		
SCB	*	ZA	*	*	*	000001	999999		

Documents

Document name
master.xml

Customer statement / workshop findings

Should a Continental series vehicle require the fresh air flap control motor replacing (Figure 1 Point A) or the air circulation flap control motor replacing (Figure 1 Point B), both motors should now be changed with the HVAC unit remaining in the vehicle.

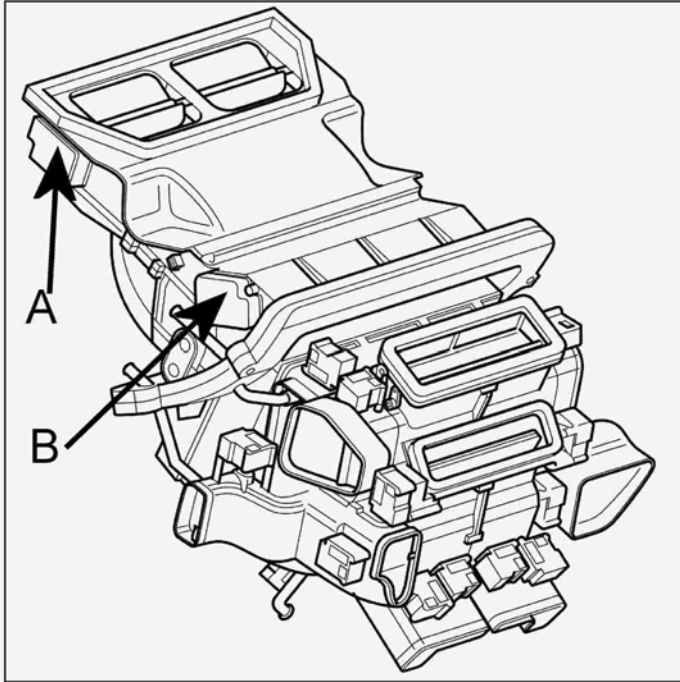


Figure 1

Technical background

The control motors are now supplied in pairs. Follow the 'Measure' section for instructions on how to change both motors without removing the HVAC unit from the vehicle.

Production change

N/A

Measure

Fresh air flap control motor and air circulation flap control motor to remove and refit

The two motors with the part number of 4D0 820 511 should always be replaced in pairs

1. Remove the plenum cover (refer to ASSIST BIN 08-19 Plenum cover-To Remove and fit)

2. Remove the fresh air intake shroud (refer to ASSIST BIN 08-20 Fresh air intake shroud-To remove and fit)

3. Disconnect the three loom clips located on the under side of the fresh air shroud (Figure 2)

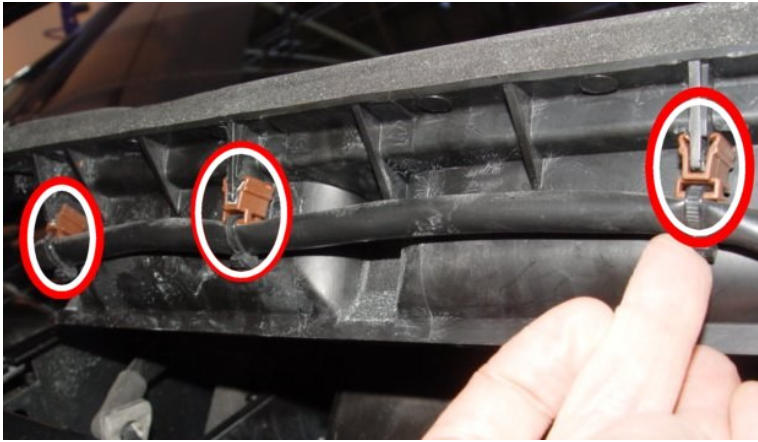


Figure 2

4. Position the shroud as shown in Figure 3, ensuring the use of a protective cover



Figure 3

The following instructions explain how to remove the rear part of the fresh air intake shroud. A T15 magnetic Torx driver with a 100mm magnetic blade is highly recommended. The magnetic driver helps eliminate the risk of any fixings dropping into the plenum and lower shroud areas



To stop any fixings dropping into the plenum, place a suitable cover on each side and over the top of the lower fan motor shroud (Figure 4)



Figure 4

5. Disconnect any loom clips which are secured to the rear shroud and remove the rear air shroud left and right hand front Torx screws (refer to Figure 5 for the location of the screws)

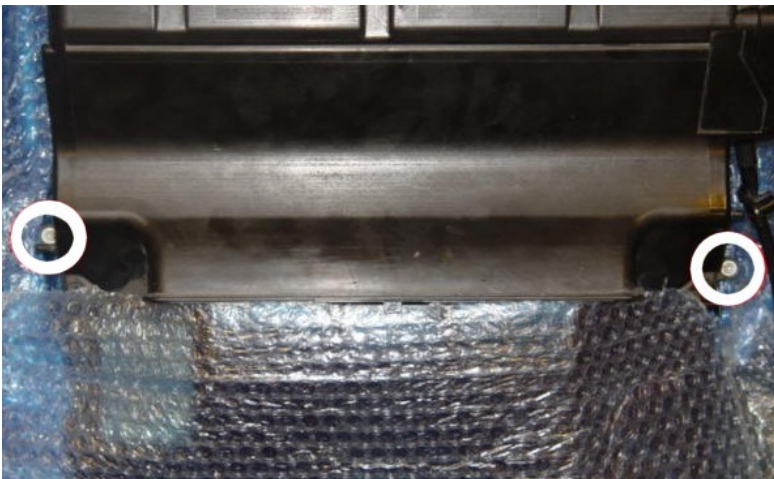


Figure 5

6. The remaining four T15 screws are located underneath the bulkhead (Figure 6). The screws are tight to access. Please take extra time and care when removing the four screws. Using the T15 driver proceed to remove the four T15 screws (Figure 7)

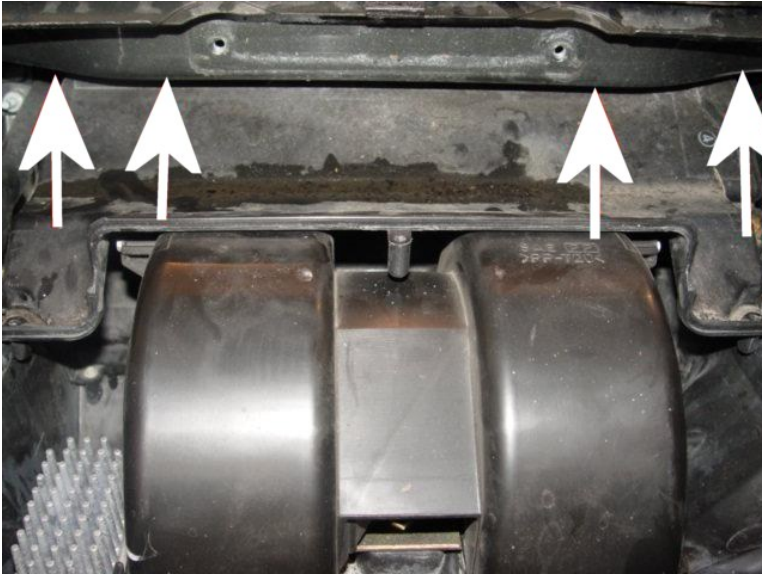


Figure 6



Figure 7

7. Carefully lift off the rear of the fresh air shroud and place along side the front fresh air shroud (Figure 8)



Figure 8



When changing the motors always ensure that both shrouds are always placed on a protective cover to eliminate any fixings being lost, the cover will also provide protection

8. Replace the two control motors (refer To ASSIST BIN 08-20 Fresh air flap control motor-To remove and fit). The same ASSIST procedure should also be applied when replacing the air circulation flap control motor

9. With both motors now replaced, refit the rear part of the fresh air shroud, ensuring that it has located fully into lower part of the fan motor shroud

10. Refit the two Torx screws (refer to Figure 5) and refit the loom clips back onto the rear shroud

11. Using the magnetic Torx driver and a small piece of suitable tape to reduce the risk of losing a fixing (Figure 9), refit the four rear fresh air shroud screws. Remove any left over tape from the fixings should any be left attached



Figure 9

12. Refit the fresh air intake shroud (refer To ASSIST BIN 08-20 fresh air intake shroud to Remove and fit), ensuring the clips shown in Figure 2 are secured back into position

13. Refit the plenum cover (refer To ASSIST 08-19 plenum cover to remove and fit)

14. Using VAS 5052 initiate the HVAC control motors by following the basic settings instructions below

- Select Guided Functions-Select model
- Select Heating, ventilation and air-conditioning system (HVAC)
- Basic settings-HVAC
- Follow screen prompts to perform Basic settings

Warranty accounting instructions

Warranty Type	910 or 110
Labour Operation Code	87 20 20 99 (for RO open date on or before 10 December 2010) 87 20 20 06 (for RO open date after 10 December 2010)
Damage Service Number	87 20
Damage Code	00 40
Time	120 TU

Parts information

4D0 820 511 Control Motors Quantity 2

Customer information

N/A