



PORSCHE

Porsche Gold Coast  
125 S. Service Rd  
Jericho, NY 11753  
Phone: (516) 758-0800  
Fax:  
E-Mail:

VIN  
WP0ZZZ96ZNS490546

Workshop Order No.  
104472

Certificate No.  
44201.740684501880

Date  
05-Jan-2021

### Porsche Classic Technical Certificate for Porsche WP0ZZZ96ZNS490546

Fascination for Porsche Classic vehicles is always closely linked with Porsche history. We are proud of our history and appreciate that your car is a part of it. Your Porsche Classic vehicle's part in Porsche history is further enhanced with the Porsche Classic Technical Certificate. This document was created for your Classic 911 Carrera RS Coupe showing your vehicle's status and options at the time of delivery in model year 1992. It includes all vehicle data available as of this writing. Your Classic Technical Certificate also states whether your engine and transmission number and type remain consistent with the vehicle's original equipment trim and options at the time of delivery. The findings listed on the Certificate are confirmed by visual inspection of all markings present.

#### Vehicle data:

Vehicle Ident No.: WP0ZZZ96ZNS490546  
Model Type: 964360  
Date of Production: Oct-1991  
Delivery Point: Italy

#### Engine and Transmission:

Engine Type: M64/03  
 Engine No.: 62N81012  
 Transmission Type: G50/10  
 Transmission No.: 2002479  
Displacement: 3.6 liter

Visual inspection corresponds to original documents

Visual inspection does not correspond to original documents

Information not provided

Information not available

VIN  
WPOZZZ96ZNS490546

Workshop Order No.  
104472

Certificate No.  
44201.740684601880

Date  
05-Jan-2021

### Exterior:

Body Color: Midnight Blue Met  
Top Color: Midnight Blue Met  
Code: F8F8  
Tire Brand: Michelin  
Country Equipment: C07

### Interior:

Color: Black/Marine Blue  
Material: Partial Leather  
Code: NS

### Optional Equipment:

C07 Equipment for Italy  
384,385 Bucket Seat - L/R  
481 5 Speed Manual Transmission  
983 Seat Covers in Leather - Front

220 Limited Slip Differential  
404 17" Cup Wheels  
564 Without Airbag

### Technical Check:

To give you a complete overview of your Porsche Classic, we have performed a technical check on your vehicle. The technical statements refer to a visual and functional inspection performed by Porsche Classic Technicians from your Porsche Classic Partner Porsche Gold Coast on 05-Jan-2021.

**During the technical check on your vehicle, the following test points failed to meet requirements:**

VIN  
WPOZZZ96ZNS490546

Workshop order No.  
104472

Certificate No.  
44201.740684501880

Date  
05-Jan-2021

**Optional Equipment (continued):**

**Failed Test Points (continued):**

# PORSCHE

## CLASSIC TECHNICAL CERTIFICATE

Porsche Classic Partner: Porsche Gold Coast  
Workshop Order No.: 104472 Date of check performed: 05-Jan-2021

### A. Vehicle Data

Vehicle Identification Number: WPOZZZ96ZNS490546 Mileage: 62647 km  
Model Type: 911 Carrera RS Coupe Date of Production: Oct-1991  
Engine Type: M64/03 Engine No.: 62N81012  
Transmission Type: G50/10 Transmission No.: 2002479

### B. Wheels/Tires

Summer  Winter  All-season

	Width	Profile	Diameter	Brand	N-Spec
Front	205	50	17	Michelin	N-3
Rear	255	40	17	Michelin	N-3

Tread depth (min. 3mm)

		Inside (mm)	Center (mm)	Outside (mm)	Pressure (psi)	Date Code
Pass	Tire front left	6	6	6	29	28/18
Pass	Tire rear left	6	6	6	36	30/18
Pass	Tire rear right	6	6	6	36	28/18
Pass	Tire front right	6	6	6	29	28/18
Present	Spare wheel	3	3	3	0	12/94

All tires must conform to the recommended speed and load index and all specifications. Maximum age of summer tires 6 years, winter tires 4 years.

### C. Drive System/Underbody (function and condition)

Pass	Exhaust system	Pass	Wheel bearings
Pass	Chassis/wheel suspension (shock absorbers, springs, suspension)	Pass	Brake lines/hoses
Pass	Transmission	Pass	Brake pads/shoes
Pass	Drive axles	Pass	Brake discs/drums
Pass	Steering gear	Pass	Brake calipers/cylinders, air ducts, cover plates
Pass	Fuel system	Pass	Radiators/oil coolers/fans
Pass	Underbody cover (remove under steering, engine and transmission)	N/A	Radiator hoses/connections (coolant loss, leaks)

### D. Engine Compartment

Pass	Ignition system	Pass	Engine (no visible defects, fluid loss)
Pass	Alternator/generator on-board voltage	Pass	Electrical connections and fuses
N/A	A/C compressor	Pass	Battery: <i>State of charge/quiescent voltage State of health/ standing performance</i>
Pass	Belts (generator, A/C, fans, power steering)		

### E. Fluids (fill levels and age)

Pass	Engine oil	Pass	Brake/clutch fluid
N/A	Coolant (antifreeze protection down to: XX °F)	Pass	Windscreen and headlight washer fluid
N/A	Power steering hydraulic oil	Pass	Transmission fluid

### F. Interior (function and condition)

Pass	Ignition/ignition lock	Pass	Warning lights and sounds
Pass	Wipers front/rear	Pass	Heating/ventilation/air-conditioning/climate control
Pass	Horn	Pass	Roof (Cabriolet, Targa, sliding sunroof)
Pass	Locking (doors and lids)	Pass	Alarm system and immobilizer
Pass	Remote controls	Pass	Interior lighting
Pass	Steering wheel lock	Pass	On-board clock
Pass	Exterior mirror/rear-view mirror adjustment	N/A	Airbag system
Pass	Sun visors	Pass	Rear window and mirror heating
N/A	Audio System	Pass	Seat adjustment
N/A	Power windows	Pass	Glove compartment
Pass	Ashtrays	Pass	Cigarette lighter/sockets
Pass	Seat belts		

### G. Exterior (function and condition)

Pass	Body	Pass	Wheels
Pass	Paintwork	Pass	Glass
Pass	Doors and lids	Pass	Water drains and air guides
Pass	Exterior lights	Pass	Spoiler

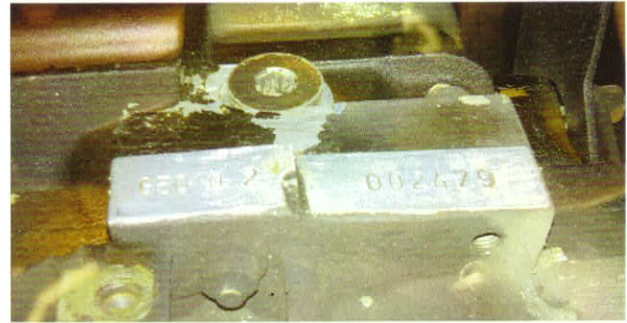
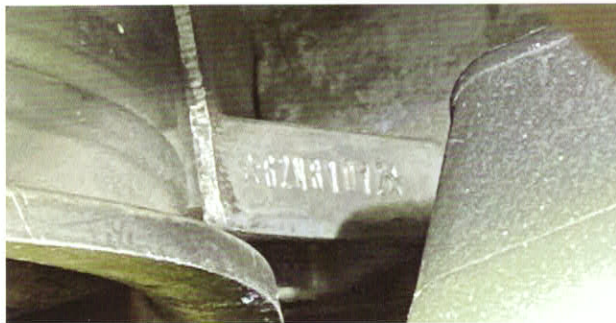
### Certification

VIN  
WPOZZZ96ZNS490546

Workshop Order No.  
104472

Certificate No.  
44201.740684501880

Date  
05-Jan-2021



### Expert opinion from your Porsche Classic Partner:

A visual inspection of the engine serial number indicated a match and the transmission serial number indicated a match to our original serial numbers records. Overall, the vehicle shows minor faults on some parts but there is no acute need for action. The paintwork is in good condition and only shows some minor damage(s). The body is in good condition and shows only minor damage(s)/rust. The interior appears in good condition corresponding to the year of construction. The engine has some minor leakages (sweating) but causes no acute need for action. The front pads are as good as new and front rotors are as good as new. The rear pads are as good as new and rear rotors are as good as new. There is no need for action with the suspension, it shows no major damages. Thank you very much for bringing your car and we are very much looking forward to seeing you again.

The information in this certificate listing the original delivery state of your vehicle has been researched to the best of our knowledge. We assume no liability for the accuracy of the information provided. Furthermore, this certificate contains no declaration concerning whether the vehicle is currently in its original delivery state. Changes on this vehicle performed after the technical check cannot be considered. With this document we assume no guarantee for the functionality of the vehicle nor is this a reference for a purchase recommendation.

We wish you a safe ride and a lot of fun with your Porsche Classic. For further questions please do not hesitate to contact us.

Best regards,

Porsche Gold Coast

Evan Christodoulou  
General Manager



Eric Breitman  
Service Manager

