

Technical Service Bulletin

Topic	Gearbox code P1703 not clearing in Guided Fault finding
Market area	Worldwide Bentley (2WBE)
Brand	Bentley
Transaction No.	2024811/2
Level	EH
Status	Released for publishing
Release date	Dec 2, 2014

New customer code

Object of complaint	Complaint type	Position
Vehicle service -> Vehicle diagnosis -> Guided Fault Finding (GFF)	Control modules, services -> With fault stored in the DTC memory	

New workshop code

Object of complaint	Complaint type	Position
Transmission -> Operation, shift and power distribution control -> Transmission control module	Control modules, services -> Communication malfunction	
Transmission -> Operation, shift and power distribution control -> Transmission control module	Control modules, services -> Software faulty	

Vehicle data

Mulsanne

Sales types

Type	MY	Brand	Designation	Engine code	Gearbox code	Final drive code
3Y2*	2011	E		*	*	*
3Y2*	2012	E		*	*	*
3Y2*	2013	E		*	*	*
3Y2*	2014	E		*	*	*
3Y2*	2015	E		*	*	*
3Y2*	2016	E		*	*	*
3Y2*	2017	E		*	*	*
3Y2*	2018	E		*	*	*
3Y2*	2019	E		*	*	*
3Y2*	2020	E		*	*	*

Chassis numbers

Manufacturer	Filler	Type	Filler	MY	Factory	From	To	Prod from	Prod to
SCB	B**	3Y	*	*	C	015001	999999		
SCB	B**	ZH	*	*	C	015001	999999		

Documents

Document name
master.xml
master.doc

-

Condition

There is no customer complaint – the fault code is logged as a result of connecting the diagnostic tester

When the fault memory is read using Guided Fault finding the following codes may be logged:

P170300 – Limp home, control unit reset (located in diagnostic address 02 – Transmission control module)

U1111 – Function limitation due to missing message (located in diagnostic address 81 – Gear Shift Control Module (GSM))

Technical Background

Due to a communication error between the tester and the transmission control module the above faults may be logged even though there is no problem with the vehicles gearbox system. If these faults are logged and there is no gearbox problem reported, clear these codes using vehicle Self Diagnosis.

Production Solution

N/A

Service

This measure uses Self Diagnosis to clear these specific codes. As no communication error exists in Self Diagnosis the codes can be cleared and no repeat code will be generated as a result of connecting the tester

Before deleting the gearbox codes, deal with any entries in the engine control unit.

Delete the gearbox codes as follows:

1. Switch off the ignition and wait for the amber illumination of the P symbol in the gear lever display to change to white. (The gear lever control unit is asleep and the entry changes to sporadic)

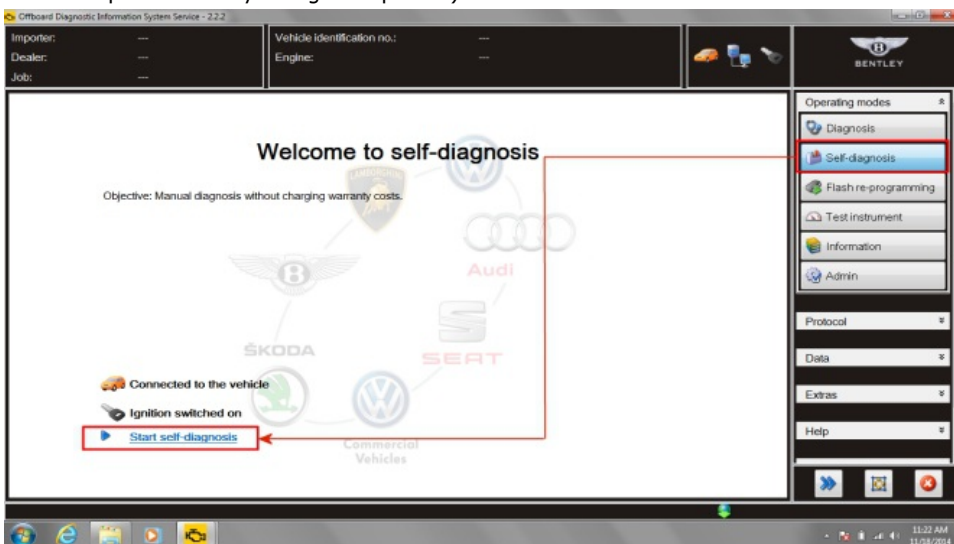


Figure 1

2. Switch on the ignition and select *Self diagnosis* on the tester (see Figure 1)

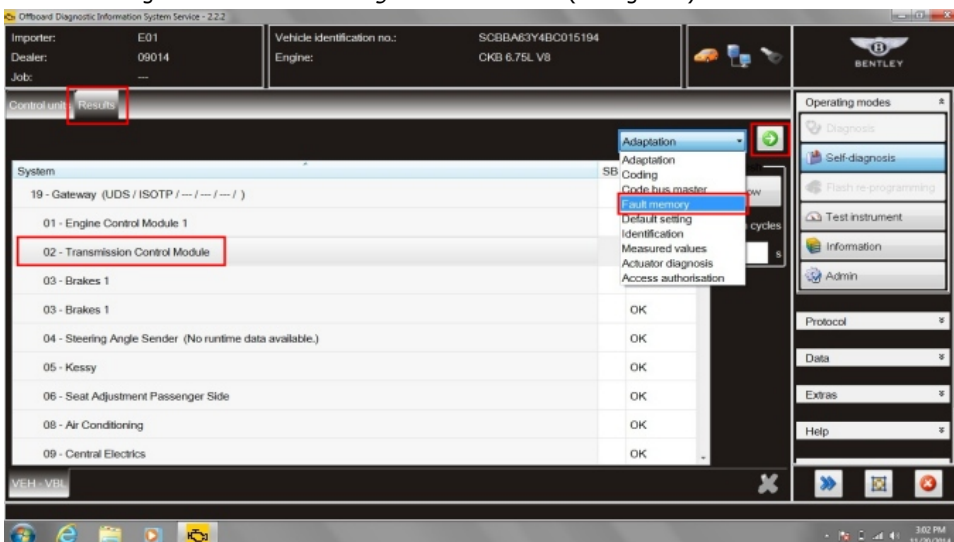


Figure 2

3. Within *Results* tab - select (single touch) *02 Transmission Control Module* – in drop down menu, Select *Fault memory* and then green forward

arrow (see Figure 2)

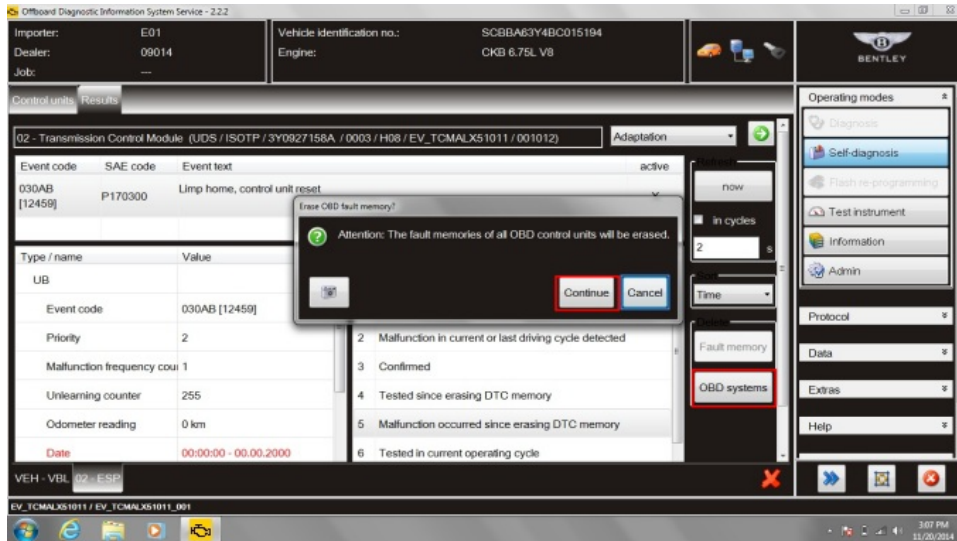


Figure 3

4. Within *Results* the code will be detailed. Select – *OBD systems* and *Continue* to erase the fault memory (see Figure 3)

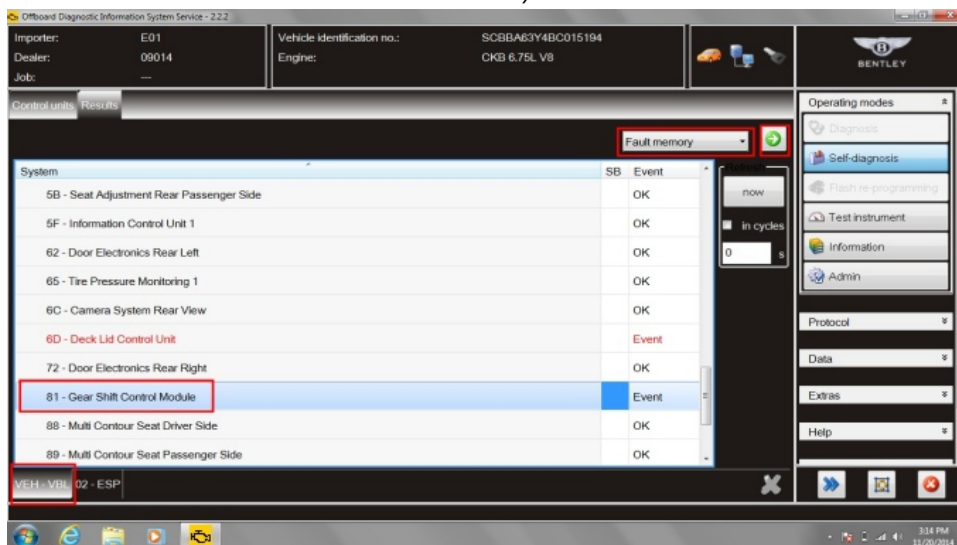


Figure 4

5. Select VEH – VBL tab - select (single touch) 81-Gear Shift Control Module - in drop down menu Select *fault memory* and then green forward arrow (see Figure 4)

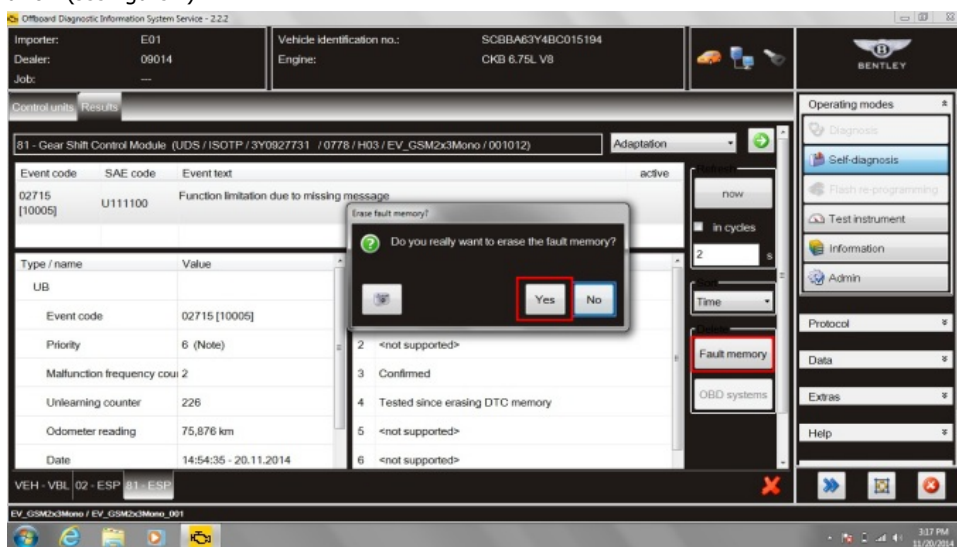


Figure 5

6. Within *Results* the code will be detailed. Select – *Fault memory* and *Yes* to erase the fault memory (see Figure 5)
7. Exit diagnostic