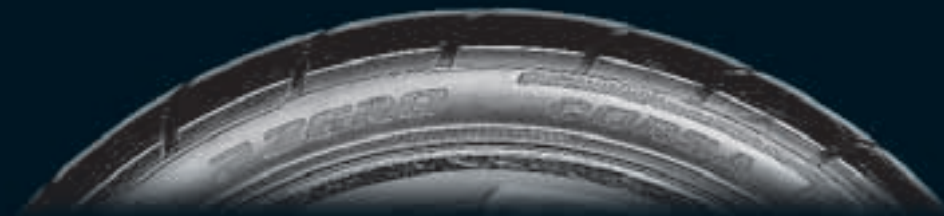


#publcor

P ZERO™ CORSA



POWER IS NOTHING WITHOUT CONTROL.

www.pirelli.com



PERFORMANCE AGAINST THE CLOCK

The technological advancement of super sports cars has enabled them to achieve a level of performance that can only be fully exploited on the track.

In this environment, the active and passive components must provide increased safety for driving at the limit.

Pirelli has epitomised this concept with the development of a new family of tyres intended primarily for the use of road cars on the track: P Zero™ Corsa and P Zero Corsa System™.



GREATER THRILLS ON THE TRACK

The appreciation of circuit and race driving is heightened with the thorough preparation and, not least, the correct choice of tyres, which can increase the level of enjoyment and competitiveness whilst retaining the highest safety standards.

Trusting in P Zero™ Corsa technology means sharing the Pirelli racing experience and being assured of the maximum driving pleasure at the boundaries of performance.



P ZERO™ CORSA

Great grip.

Born for speed, P Zero™ Corsa is the most innovative ultra-low profile road tyre for circuit racing, where maximum grip is the aim. Dry asphalt is its battlefield where it transfers hundreds of horsepower to the surface, enhancing the qualities of a sophisticated chassis.

And when you need to stop it doesn't let you down.

Caution: P Zero™ Corsa is not recommended for driving on extremely wet asphalt, where there is a risk of aquaplaning. In these cases Pirelli recommends driving cautiously at reduced speed.

Extreme performance

P Zero™ Corsa accepts no compromise.

On the track it becomes synonymous with

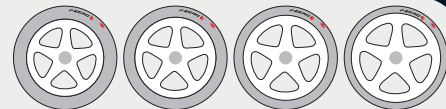
- > absolute grip
- > ultra-precise cornering
- > exceptional lateral rigidity for fast cornering
- > instant steering response
- > constant trajectories.

Since P Zero™ Corsa is both asymmetric and directional, maintaining performance levels requires the correct orientation of the tyres on the axles, observing the "left" or "right" indications on the sidewalls.



Fitting oversized P Zero™ Corsa in relation to the standard and the car manufacturers instructions*, along with wider/larger diameter wheels, increases the level of grip in race driving.

These tyre/wheel combinations are more capable of withstanding the centrifugal deformation caused by high speed and improve tread performance by increasing the contact area.



(* Always refer to the tyre/vehicle manufacturers instructions.

For further advice contact the local Pirelli office or specialised dealers.



PIRELLI

P ZERO™ CORSA

More grip at any temperature

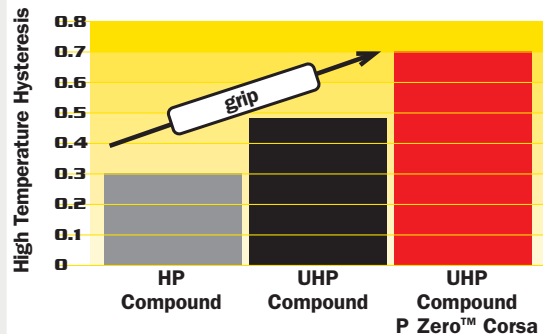
In extreme driving, particularly on the track, tyres reach high operating temperatures.

Under these conditions, the quality of the compound is critical.

P Zero™ Corsa utilises an innovative composition with high hysteresis value: a Pirelli idea, to adjust the grip to the thermal conditions under which the tyre is operating whilst allowing a tyre construction with much greater structural rigidity than a normal road tyre.

Thus constant hard cornering and braking are met with real grip.

High Temperature Hysteresis



The excellence of P Zero™ Corsa in extreme driving originates from the production processes and structure. The tensional balance of the components gives the tyre a profile that optimises the synergies between belting and spirally-wound nylon. The advantages are greater steering precision and uniform tread wear.

Extraordinarily wide for a rigid tyre, the footprint of the P Zero™ Corsa is the result of highly flexible steel belting that employs new materials to reduce weight while increasing tensile resistance.

Size Range

205/50ZR17	89Y	255/35ZR18	94Y	Extra Load
215/45ZR17	87Y	265/35ZR18	(93Y)	
225/45ZR17	91Y	295/35ZR18	(99Y)	
235/45ZR17	(94Y)	285/30ZR18	(93Y)	
255/40ZR17	(94Y)	295/30ZR18	(94)	
225/40ZR18	(88Y)	315/30ZR18	(98Y)	
235/40ZR18	(91Y)			

Safety warning: danger may result from improper use. Follow tyre manufacturer's instructions. Refer to car manufacturer's recommendations with respect to tyre fitments for each model.



P ZERO™ CORSA System™

From track to road

Two tyres with different tread patterns ideal for use on both track and road, developed in association with vehicle manufacturers that lead the high performance sector.

Thus the P Zero Corsa System™ was born: directional and asymmetric designs.

A highly technical concept to enhance not only performance but also styling: P Zero Corsa System™ is, in fact, the extreme expression of the Pirelli P Zero™ project, the absolute benchmark in its category.

Designed in conjunction with car manufacturers - fitted as original equipment to the Ferrari Challenge Stradale - P Zero Corsa System™ meets the specific demands of road cars and is also suitable for track use, to savour the thrill of the racing experience.



P Zero Corsa System™ Asimmetrico

An extreme performer based on a technologically advanced design that reduces weight and increases resistance to stress. The footprint is broad and the contact pressure uniform, thanks to a structure utilising special materials that balance rigidity with flexibility under various driving conditions.

The asymmetric design serves several functions, depending on the prevailing circumstances, but always with outstanding traction values.

P Zero Corsa System™ Direzionale

Designed for racing use, it is particularly at home on wet surfaces. Highly resistant to aquaplaning, it continuously and effectively expels water from the footprint area, maintaining constant contact with the road surface. It provides effective steering control and response.



P ZERO™ CORSA System™

Constant performance

Whilst the engineering qualities of the system - total grip when cornering, accelerating and braking - stand out in extreme use on the track or in road use, the synergy developed by the action of the two different tread designs is appreciated in wet driving.

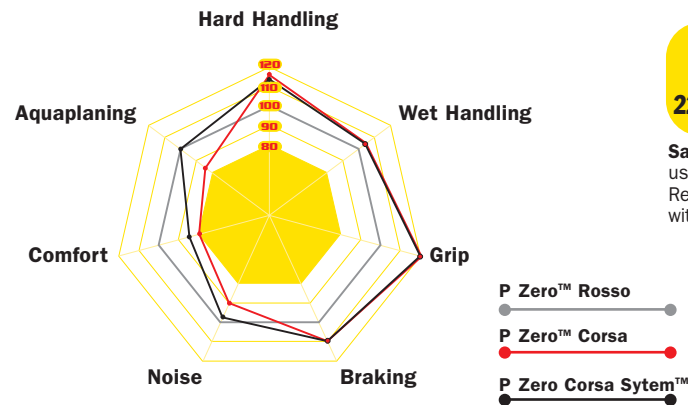
The normal disadvantage that a wide front tyre suffers in the wet is significantly reduced with the P Zero Corsa System™: with effective lateral water expulsion, the Direzionale prepares the road for the Asimmetrico, allowing it to express its excellent grip capacity and maximise driver safety.



Super-advanced technology

In addition to manufacturing features that have increased structural resistance for driving at tyre limits, Pirelli has also expended considerable effort on the tyre tread and on the compounding. The purpose is to balance the need to maintain a high performance level for long periods in the presence of extreme thermal stress.

Racing experience plays a key role in this regard: as does the sizing of the blocks, to reduce the generation of heat and not jeopardise grip after long periods of stress.



Direzionale

Asimmetrico

225/35 ZR19 (84Y)

285/35 ZR19 (99Y)

Safety Warning: danger may result from improper use. Follow tyre manufacturer's instructions. Refer to car manufacturer's recommendations with respect to tyre fitments for each model.



MAXIMISING TRACK PERFORMANCE



For maximum performance and safety on a circuit, first make sure that the vehicle itself is in perfect working order, particularly with respect to brakes, steering and suspensions.

Most modern cars can be driven on a circuit without significant modification, though for sustained circuit driving, for example on a track day, it is recommended that the brake pads be changed to a competition version so as to withstand the extra heat generated by the constant use that circuit driving demands. The ultra hard and constant braking and acceleration used in circuit driving is the principal reason for using a tyre like P Zero™ Corsa, rather than a standard tyre. P Zero™ Corsa can withstand constant hard use and the high temperatures generated, delivering perfect lap times, lap after lap.



Tyre Set-up for Circuit Driving

Having quite a stiff construction, P Zero™ Corsa does not necessarily need extra pressure to deliver its performance. In fact it is designed to run at pressures around 2 bar, the finite adjustments depending on vehicle type.

Critical to understanding the set-up is to appreciate that this pressure is the 'operating pressure' of the tyre when it is fully warmed up to working temperature and that the difference in temperature between 'hot' and 'cold' tyres can be very significant, typically 0.5 bar.

Set-up procedure: set the tyre pressures when cold to approximately 0.4 bar (6lbs/sq.ins) less than the required operating pressure.

Drive the car on the circuit for 3/4 laps to bring the tyres up to temperature, re-enter the pit-lane and immediately re-set the pressures to the required operating pressure.

Continue to check the 'hot' pressures during continued use on the circuit if that is possible.

Pirelli recommends the use of normal compressed air to inflate the tyre, providing the above procedures are followed. Specialist gasses such as nitrogen are not required unless the air source suffers from excessive contamination of humidity.

Always use a high quality air pressure gauge for consistent results. The use of metal rather than rubber valve stems is recommended as these are more resistant to high temperature.



STAY SAFE!

The pleasure of driving on a circuit is enormously enhanced when the driver feels secure, even when driving at the limit.



In-car safety equipment

Before taking your car out on a circuit it is most important to take professional advice regarding car preparation and the installation of specialised safety equipment.

For example, it is essential for circuit driving to install a 'full harness' safety belt with 'quick release' fittings.

This equipment will hold the driver firmly in the seat (which itself must be checked for secure mounting); an essential feature in the event of an accident but also highly desirable during hard cornering and braking.

The effectiveness of the seat harness can be further enhanced by the use of a racing style seat, giving added lateral support to hold the driver in place during hard cornering.

Other equipment such as roll-cage, fire extinguishers, etc may be considered necessary depending on the activity involved. Once again take professional advice as to what is required.

DRIVER SAFETY EQUIPMENT

Absolutely essential for any track driving is a good quality crash helmet. Other driver safety items are mainly concerned with protecting the driver in the case of the vehicle catching fire, for example fire retardant racing suit, boots and gloves.

In all matters concerning driver safety equipment again take professional advice as to what is required for your personal choice of circuit activity.

