

PORSCHE

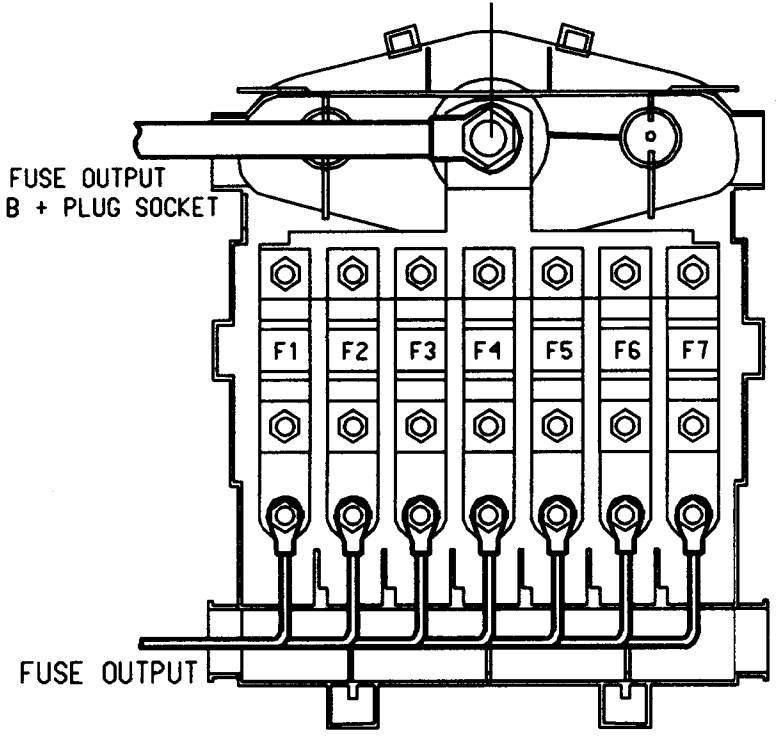
# FUSES SUPPORT

996.610.211.01

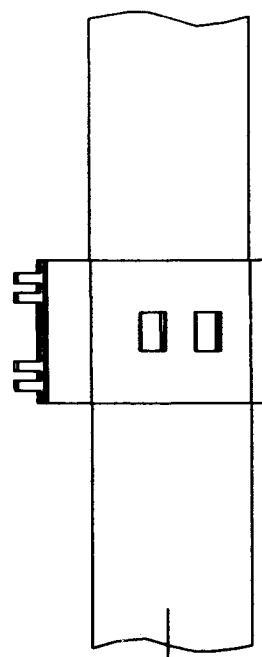
# CURRENT DISTRIBUTOR

996.610.303.00

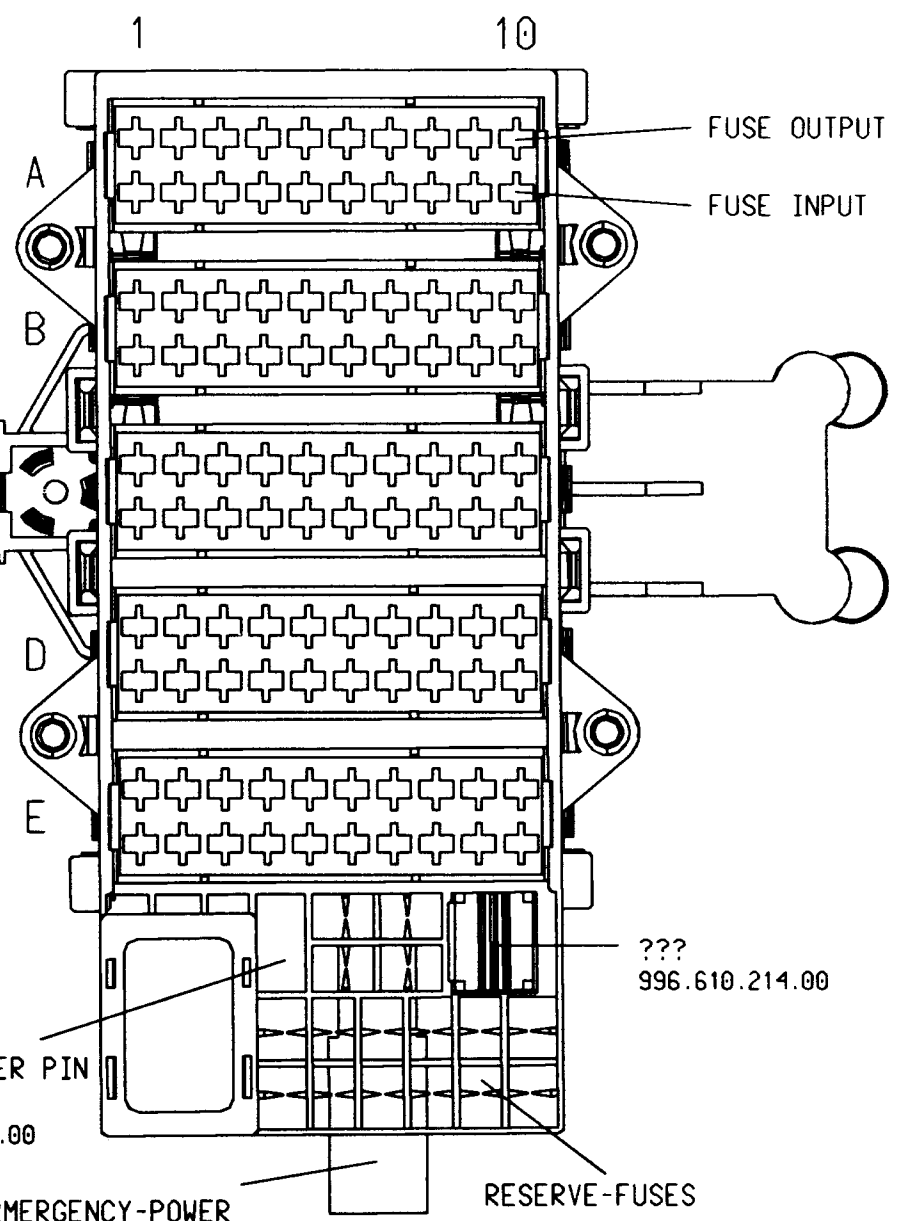
POWER SUPPLY



PSM	50 A
ON BOARD COMP. NETWORK 1	80 A
ON BOARD COMP. NETWORK 2	80 A
IGNITION LOCK	80 A
ENGINE ELECTRICS	80 A
ON BOARD COMP. NETWORK 3	80 A
PSM	50 A



WIRING LOOM



EMERGENCY-POWER SUPPLY RELAY  
999.657.006.90

COVER FUSES SUPPORT  
996.610.210.00

FUSES	VALUE	PORSCHE-NUMBER
LIGHT BROWN	5,0 A	999.607.004.00
BROWN	7,5 A	999.607.006.00
BLUE	15 A	999.607.008.00
WHITE	25 A	999.607.009.00
GREEN	30 A	999.607.010.00
ORANGE	40 A	999.607.017.00

### FUSE HOLDER A

FUSE			
NO.	VALUE	DESIGNATION	M-NO.
SI A1	15 A	HIGH BEAM RIGHT - HIGH BEAM CONTROL	
SI A2	15 A	HIGH BEAM LEFT -	
SI A3	7,5 A	SIDE MARKER LIGHT RIGHT	
SI A4	7,5 A	SIDE MARKER LIGHT LEFT	
SI A5	15 A	LICENSE PLATE LIGHT- LOCATING LIGH- INSTRUMENT LIGHTING	
SI A6	25 A	SEAT HEATER - -	M139/M340
SI A7	25 A	FOG LIGHT, REAR FOG LIGHT	
SI A8	7,5 A	LICENSE PLATE LIGHTS- CANADA	M113
SI A9	15 A	LOW BEAM RIGHT	
SI A10	15 A	LOW BEAM LEFT	

### FUSE HOLDER B

FUSE			
NO.	VALUE	DESIGNATION	M-NO.
SI B1	15 A	CLUSTER TIPTRONIC BUTTON PSM PSM DIAGNOSIS POWER TOP	
SI B2	15 A	HAZARD-WARNING A.TURN-SIGNAL SYSTEM	
SI B3	25 A	TWO-TONE HORNS	
SI B4	15 A	ENGINE COMPARTMENT BLOWER -	
SI B5	7,5 A	BACKUP LIGHT CU MEMORY MIRROR ADJUSTMENT - CU POWER TOP	
SI B6	15 A	TURN SIGNALS POWER WINDOW -	
SI B7	15 A	STOP LIGHT CRUISE CONTROL	
SI B8	15 A	CU ALARM-CL CU ME CU TIPTRONIC	M249
SI B9	15 A	CU ABS PSM	
SI B10	15 A	INSTRUMENT CLUSTER DIAGNOSIS HEADLIGHT VERTICAL AIM -CONTROL	

### FUSE HOLDER C

FUSE			
NO.	VALUE	DESIGNATION	M-NO.
SI C1	25 A	ENGINE ELECTRICS	
SI C2	30 A	IGNITION INJECTION HEATER OXYGEN SENSORS	
SI C3	15 A	CU ALARM-CL POWER WINDOW, SUN ROOF, CU POWER TOP INSIDE LIGHT	
SI C4	30 A	FUEL PUMP	
SI C5			
SI C6	25 A	WIPER	
SI C7	7,5 A	TERM.X CONTROL WIRES	
SI C8	40 A	RADIATOR FAN - RIGHT	
SI C9	25 A	HEADLIGHT CLEANING SYSTEM	M288
SI C10	40 A	RADIATOR FAN - LEFT	

### FUSE HOLDER D

FUSE			
NO.	VALUE	DESIGNATION	M-NO.
SI D1	30 A	POWER WINDOW - FRONT	
SI D2	30 A	REAR WINDOW DEFOGGER - MIRROR HEATING -	
SI D3	30 A	CONVERTIBLE TOP DRIVE SUN ROOF	
SI D4	30 A	POWER WINDOW - REAR CABRIO	
SI D5	15 A	CIGAR LIGHTER	
SI D6	30 A	HEATER AIR CONDITIONING SYSTEM	
SI D7	15 A	REAR SPOILER- COVER OPENER	
SI D8	7,5 A	RADIO	
SI D9	15 A	AUDIO OPTION PACK	M490
SI D10	7,5 A	TELEPHONE	

### FUSE HOLDER E

FUSE			
NO.	VALUE	DESIGNATION	M-NO.
SI E1	7,5 A	TERM.86S/ CU ALARM-CL/ RADIO/ CLUSTER/ INFOSYSTEM/ CU SENSOR OVERTURN/ DAYTIME RUNNING LIGHT	
SI E2	7,5 A	CU MEMORY	M537/M538
SI E3	30 A	POWER SEAT CU MEMORY LEFT	M537
SI E4	30 A	POWER SEAT CU MEMORY RIGHT	M538
SI E5	7,5 A	INFOSYSTEM	M662
SI E6	7,5 A	TERM.30 TELEPHONE HANDY NAVIGATION ORVR	M614/M618/M662
SI E7	7,5 A	AIR CONDITIONING SYSTEM - -	M573
SI E8	7,5 A	TERM.15 TELEPHONE HANDY INFOSYSTEM	M614/M618/M662
SI E9	25 A	PSM	M476
SI E10	15 A	PSM	M476

### FUSE HOLDER VARIOUS

FUSE			
NO.	VALUE	DESIGNATION	M-NO.
MF 1/1	40 A	MAXI FUSE SECONDARY AIR PUMP - ON RELAY SUPPORT 2	M661
		LITTLE FUSE 999.607.011.00	

911 TURBO (996) MODEL 2001 SHEET 27 FUSE CONNECTION